

2017 Construction Outlook Survey Results  
Illinois Results

4. How would you describe your current conditions for filling key salaried positions (project manager/supervisor, estimator, etc.) and hourly craft positions (carpenter, laborer, equipment operator, etc.)?

5. Do you expect any changes in the availability of salaried/hourly craft construction professionals over the coming 12 months?

6. Has your firm increased pay or benefits to retain or recruit salaried/hourly craft professionals?

7.

8. Which of the following issues are the biggest concerns to you and your business?

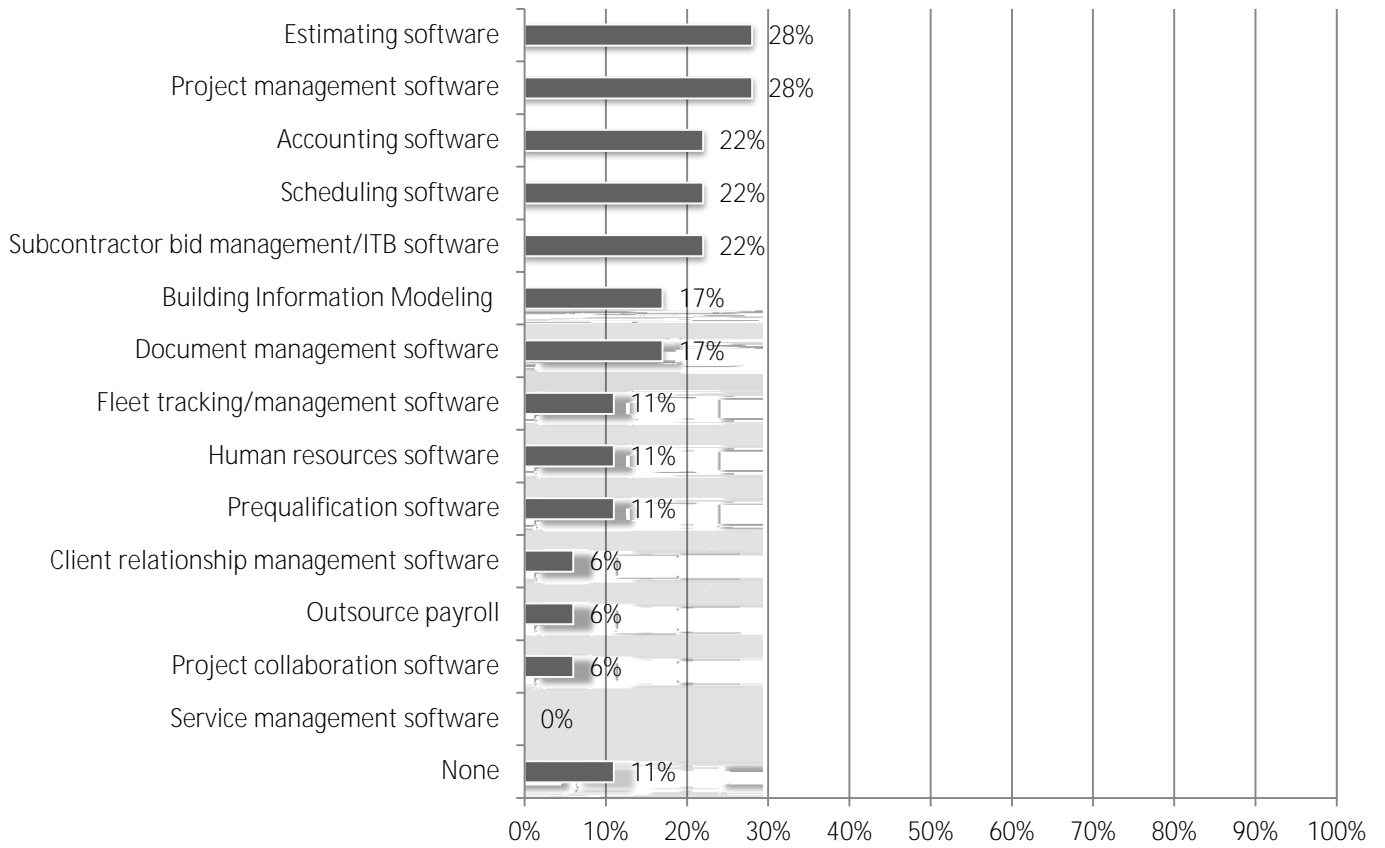
9. What challenges, if any,



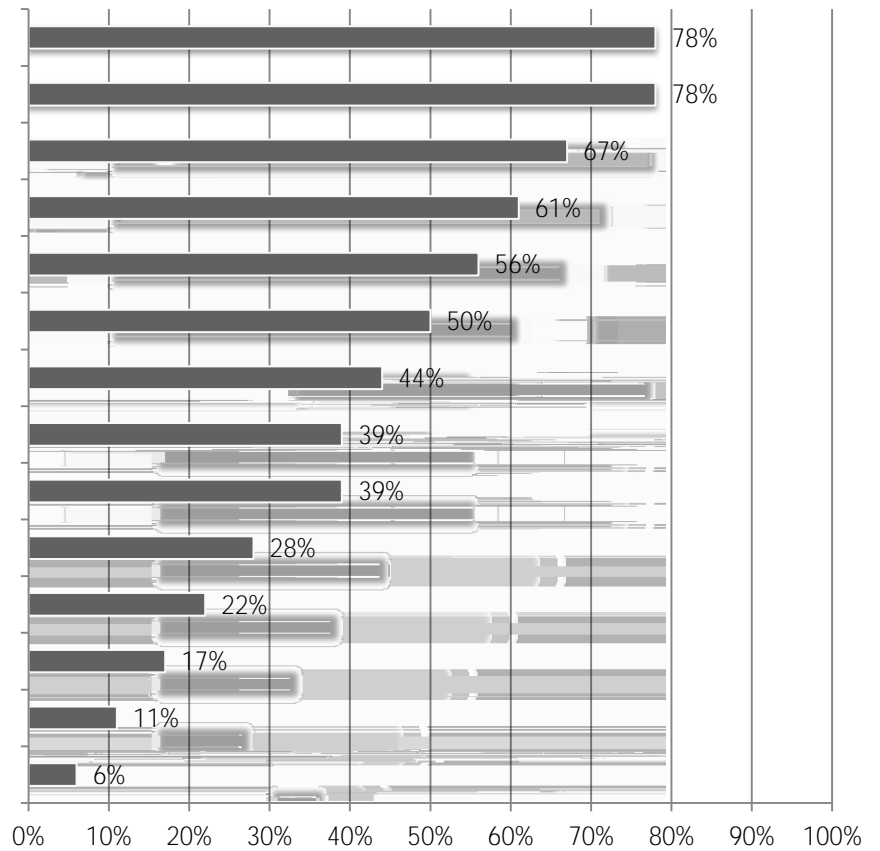


20. What information technology (IT)

25. What software technology do you plan to invest in during 2017?



26. How does your company plan to use mobile software technology?



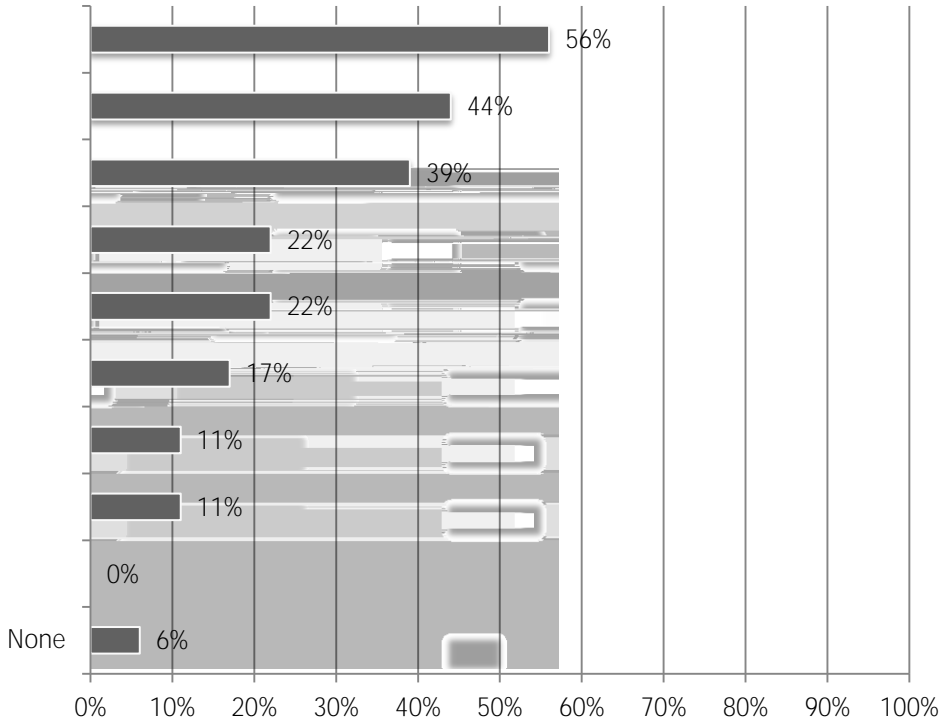
27. How do you handle the use of mobile devices (e.g., tablets, smartphones) in your company?

28. Do you currently have a mobile security policy in place?

29. Do you currently have an overall IT security plan in place to protect against hacking?



32. What are your biggest IT challenges?



33. Estimate the total dollar amount of work your firm performed in 2016.

34. How many total employees does your organization employ at all of its locations?

35. Do you employ union workers, or is your firm primarily open shop?