

# 2017 Construction Outlook Survey Results

## Kentucky Results

*Total Responses: 30. Responses varied for some questions. Percentages are based on responses to each question and may not sum to 100 due to rounding.*

1. Compared to 2016, do you expect the available dollar volume of projects you compete for in 2017 to be:

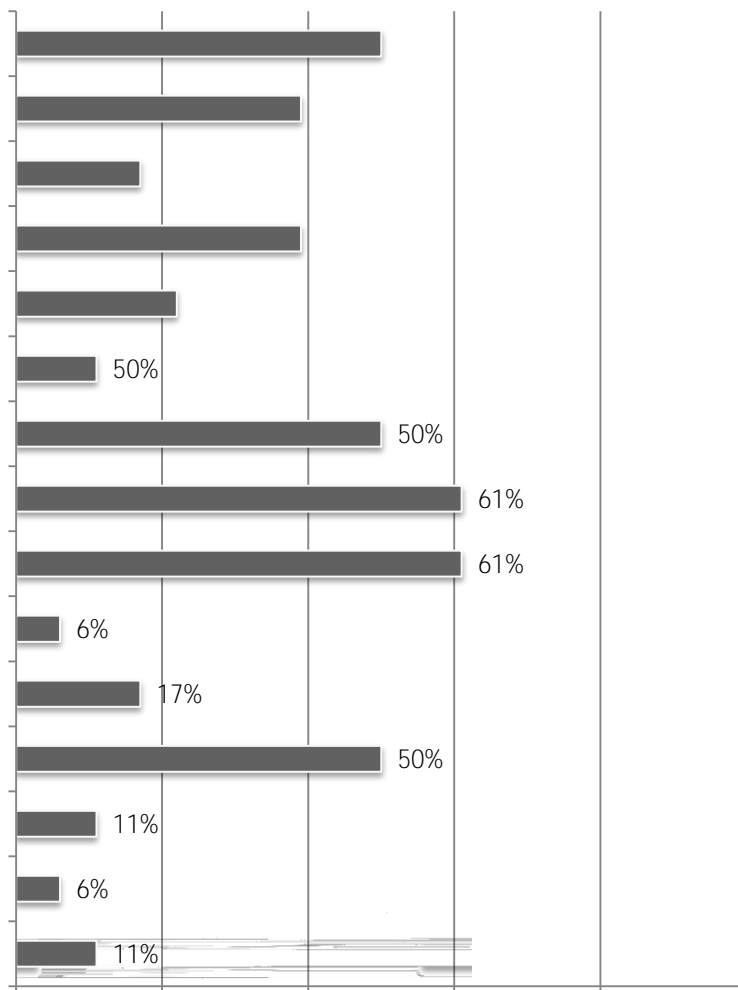
Retail, Warehouse, Lodging	38%	13%	50%	25%
All projects	39%	17%	44%	22%
Multifamily Residential	39%	7%	44%	22%

4. How would you describe your current conditions for filling key salaried positions (project manager/supervisor, estimator, etc.) and hourly craft positions (carpenter, laborer, equipment operator, etc.)?

5. Do you expect any changes in the availability of salaried/hourly craft construction professionals over the coming 12 months?

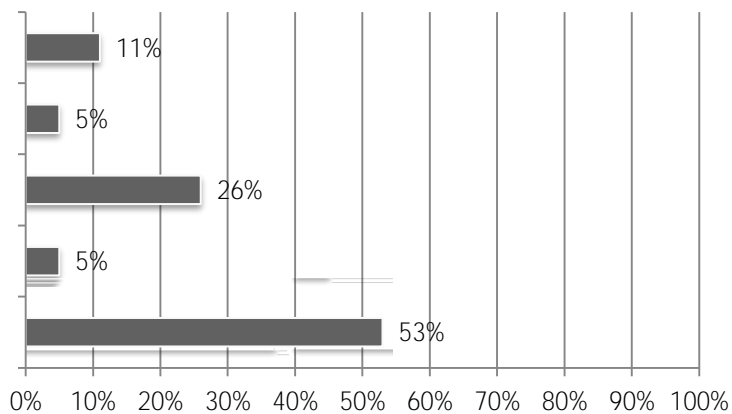
6.

8. Which of the following issues are the biggest concerns to you and your business?



9. What challenges, if any, do you see regarding the safety and health of your workers?

10. How would you describe credit or lending conditions for your company?



11. Did the cost of providing health care insurance for your employees increase or decrease in 2016?

12. Do you expect the cost of providing health care insurance for your employees to increase or decrease in 2017?

13. Do you expect the amount of projects involving Building Information Modeling (BIM) will increase, decrease or stay the same for you in 2017?



20. What information technology (IT), if any, do you use to obtain work?

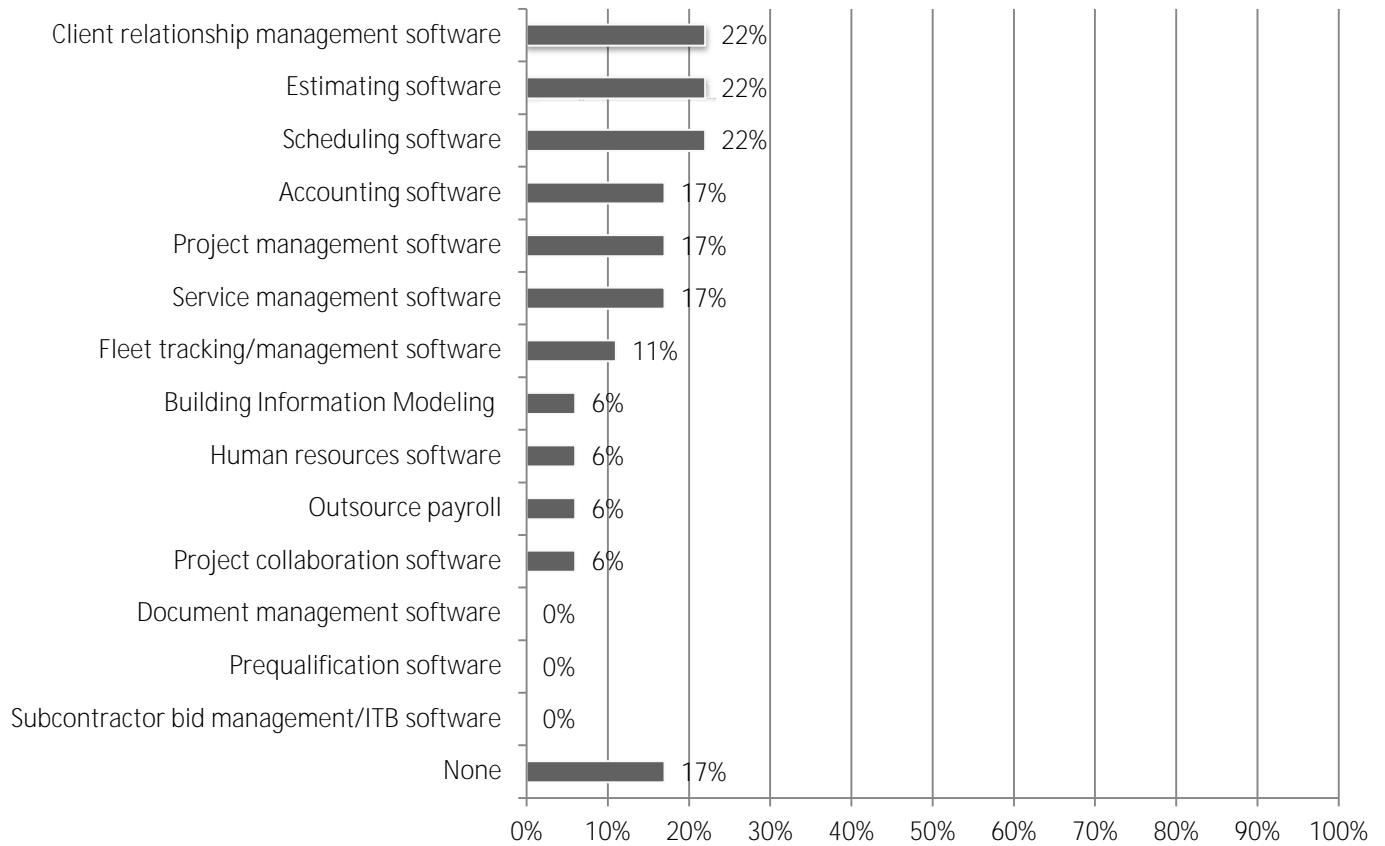
21. What is the size of your in-house IT staff?

22. Do you use an outsourced service for IT?

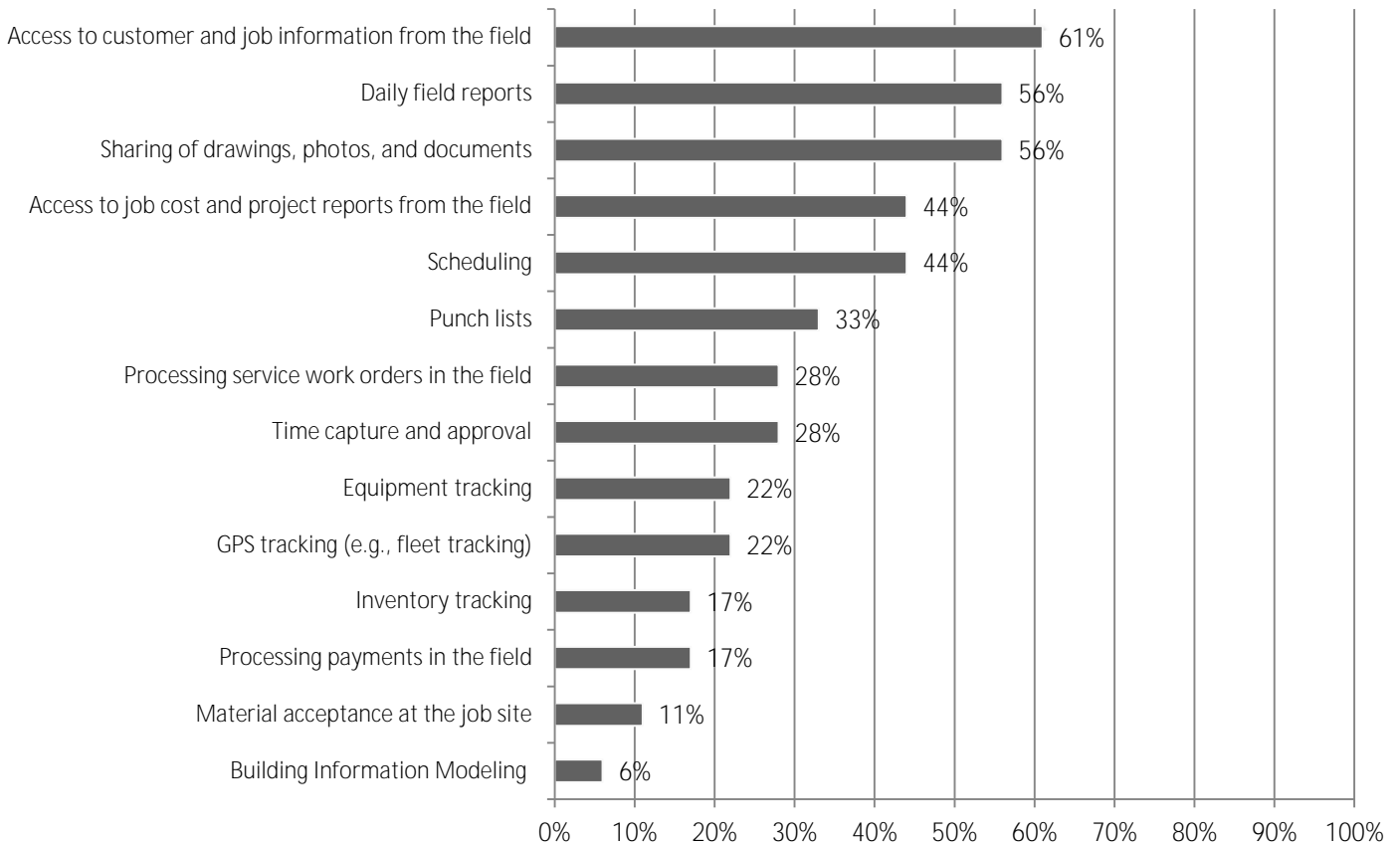
23. Approximately what percent of your gross annual revenue do you spend on IT?

24.

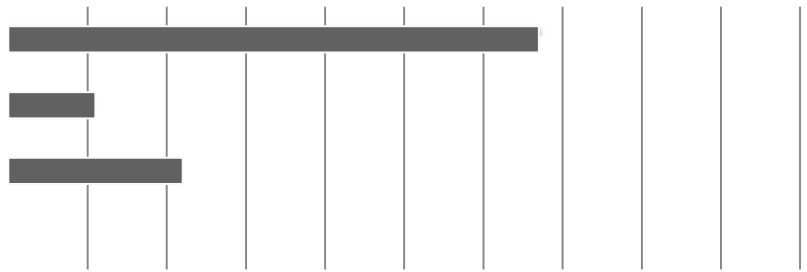
25. What software technology do you plan to invest in during 2017?



26. How does your company plan to use mobile software technology?



27. How do you handle the use of mobile devices (e.g., tablets, smartphones) in your company?



28. Do you currently have a mobile security policy in place?

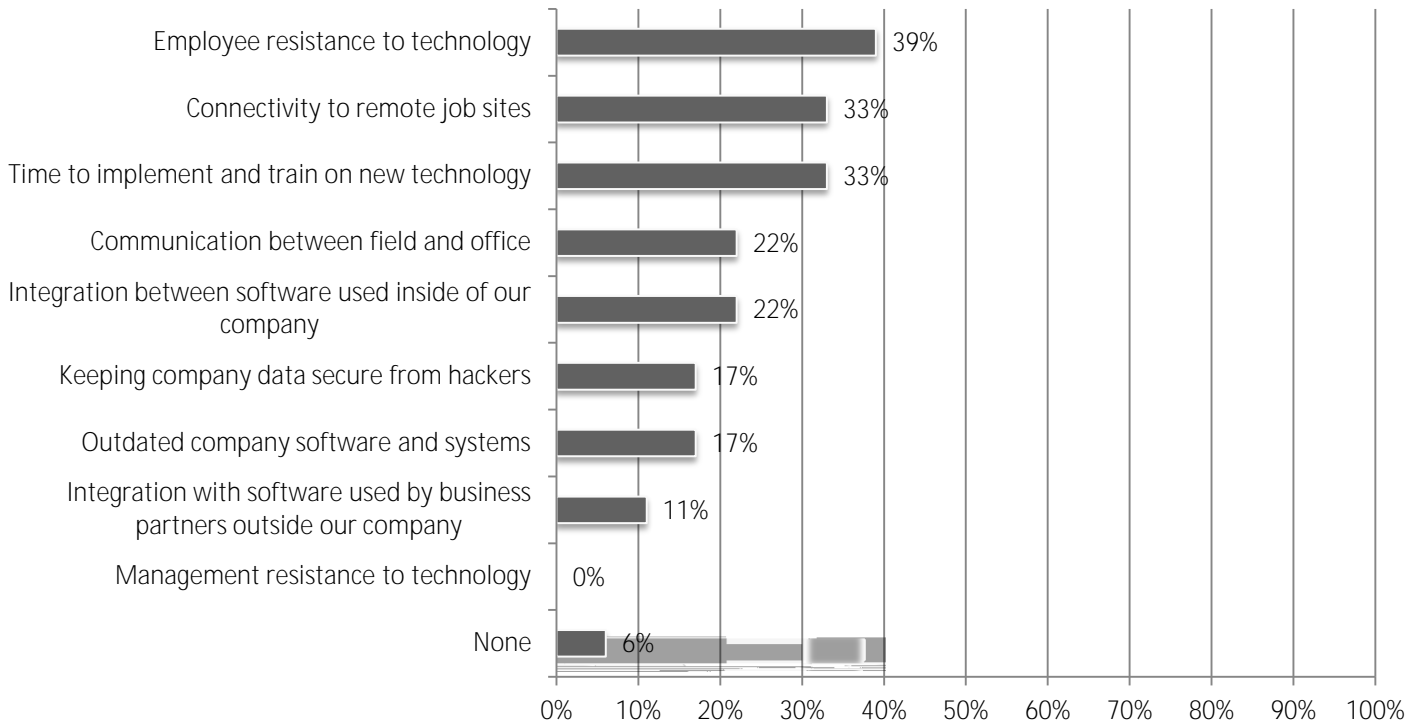
29. Do you currently have an overall IT security plan in place to protect against hacking?

30. Do you have a formal IT plan that supports your business objectives?

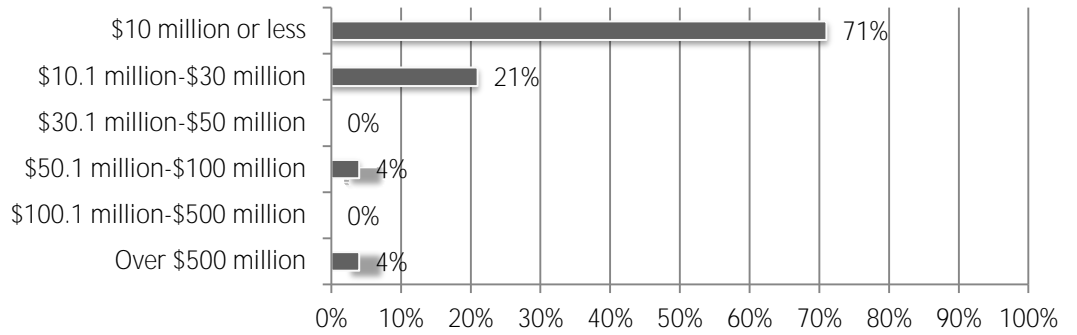
31. What is the main reason you use or plan to adopt cloud-based software?



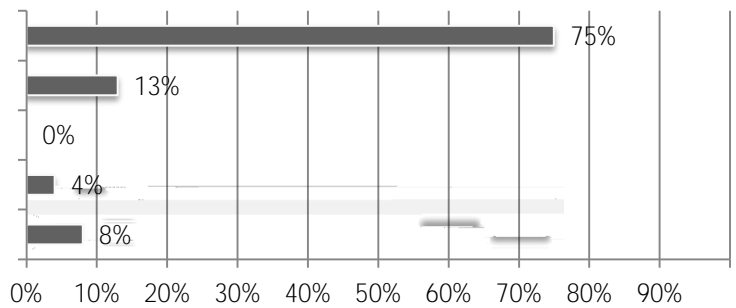
32. What are your biggest IT challenges?



33. Estimate the total dollar amount of work your firm performed in 2016.



34. How many total employees does your organization employ at all of its locations?



35. Do you employ union workers, or is your firm primarily open shop?