

## 2018 Workforce Survey Results North Carolina Results

**1. In the next 12 months, do you expect your firm will hire additional or replacement:**

---

---

---

---

---

---

---

---

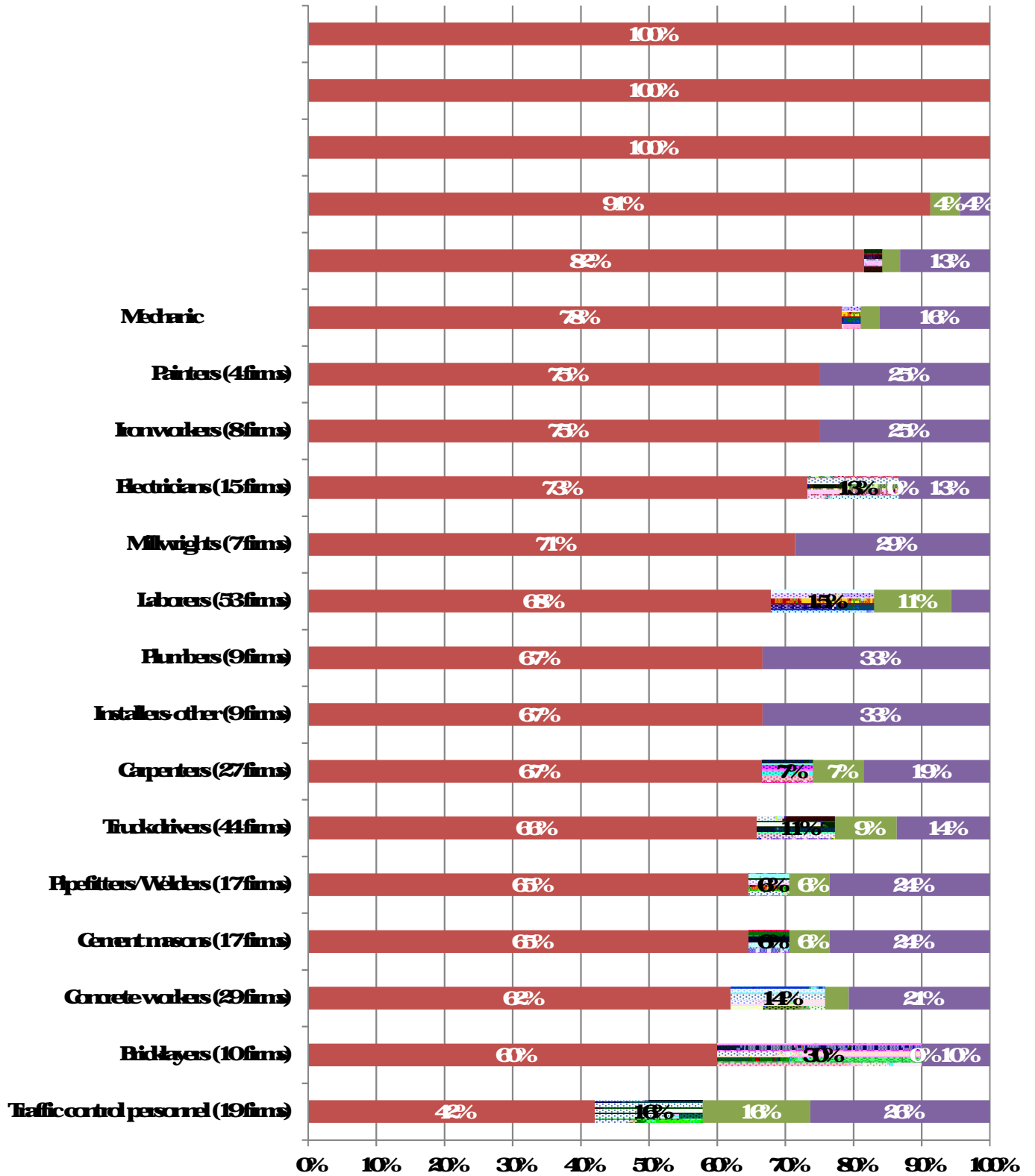
---

---

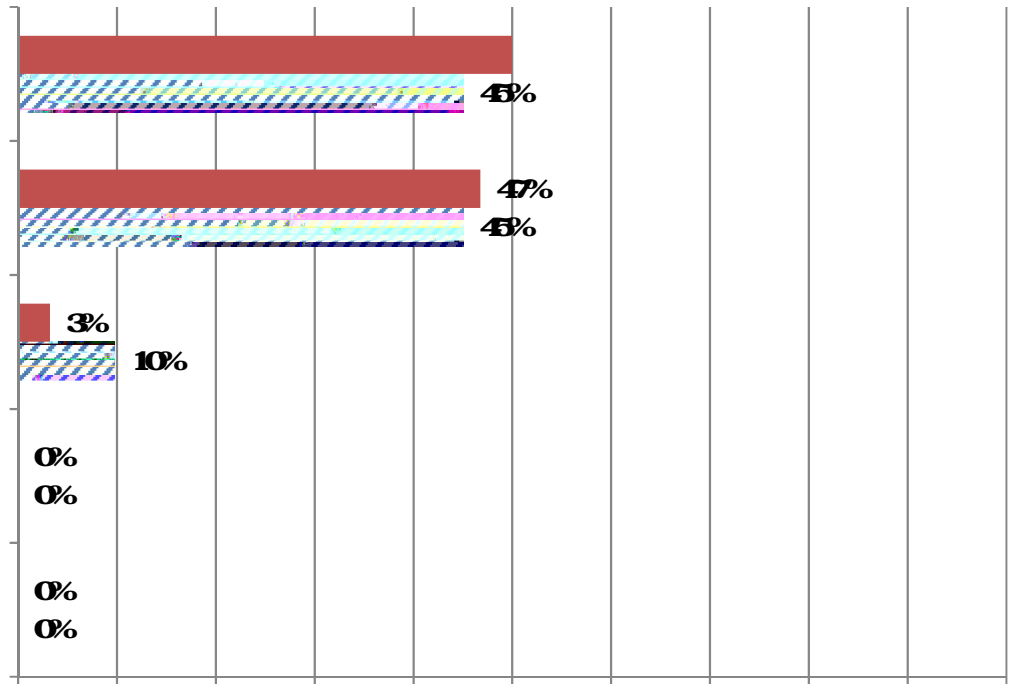
**2. How would you describe your current situation in fillings skilled and hourly craft positions?**



4. What has been your firm's experience this year in filling the following types of hourly craft positions?



**5. Do you expect any changes in the availability of hourly craft or skilled personnel over the coming 12 months?**



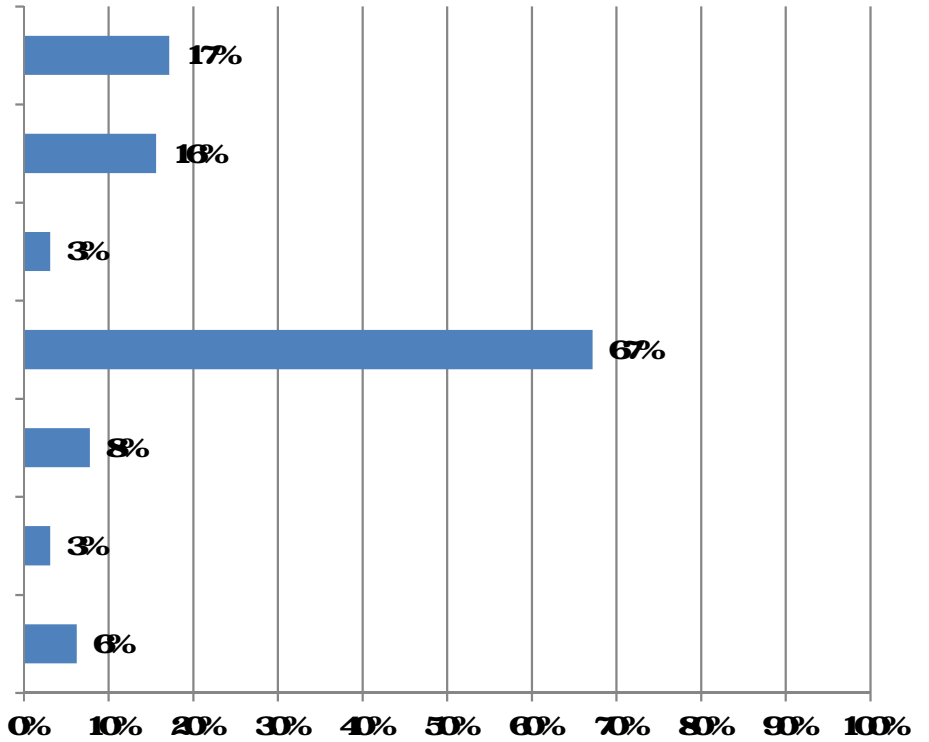
**6. How would you rate the adequacy of the local pipeline for supplying craft personnel who are**



**9. Has your firm made or increased use of the following to provide workers in the past year?**



**13. If your firm is experiencing staffing challenges, how would you describe the impact on your company's safety and health program or performance? (Totals may add to more than 100% as respondents could make more than one answer.)**



**14. Please indicate which of the following types of construction projects your firm performs. (Totals may add to more than 100% as respondents could make more than one answer.)**



**15. When you self-perform construction work, do you operate as a union contractor or a non-union contractor?**

**16 How many total emp**

**18 What percent of your employees are in each of these categories?**

