

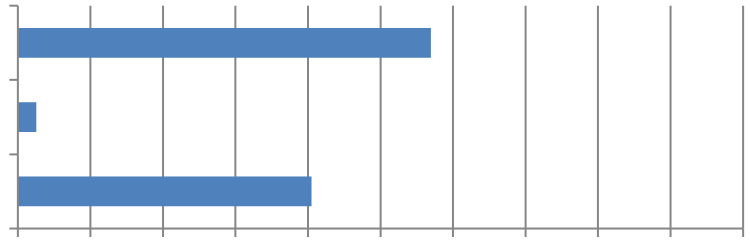
# 2022 Work Zone Awareness Survey Results

4. How many construction worker fatalities resulted from these crashes? (74 Responses)

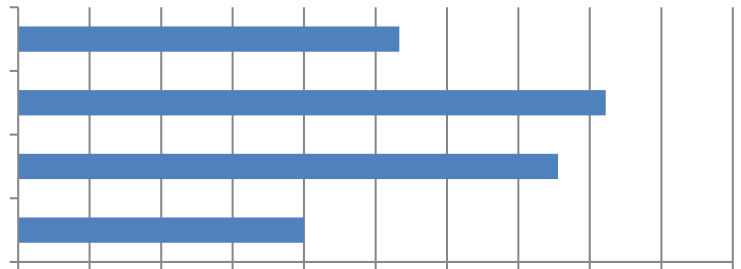
5. How many driver or passenger fatalities resulted from these crashes? (68 Responses)

6.

7. In your opinion, how much of a risk are highway work zone crashes now compared to one year ago?  
(79 Responses)

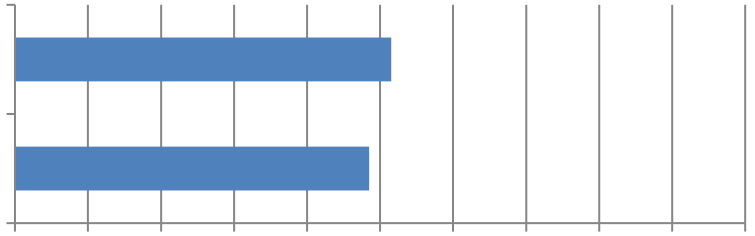


8. Why do you think highway work zone construction is more dangerous today compared to one year ago?  
(45 Responses)



9. Would any of these measures help reduce the number of highway work zone crashes, injuries and/or fatalities?  
(72 Responses)

10. Has there been an increase in work zone crashes when performing night work? (33 Responses)



11. If you answered yes, what do you attribute this to? (17 Responses)

