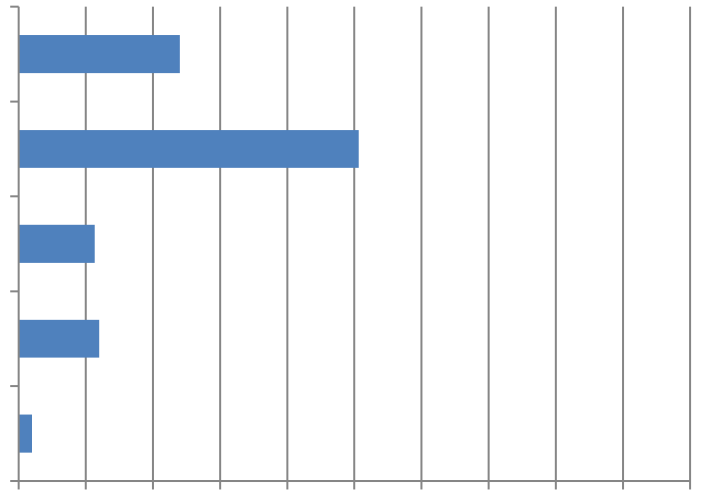


2024 Utility Infrastructure Division Survey Results

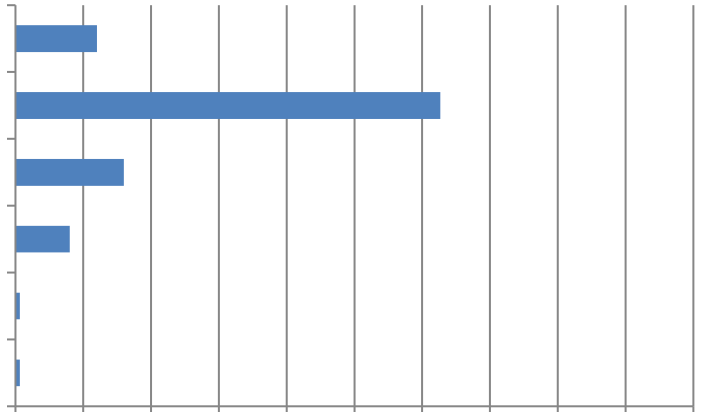
1. What types of construction services do you engage in? (Mark all that apply) Responses: 150

2.

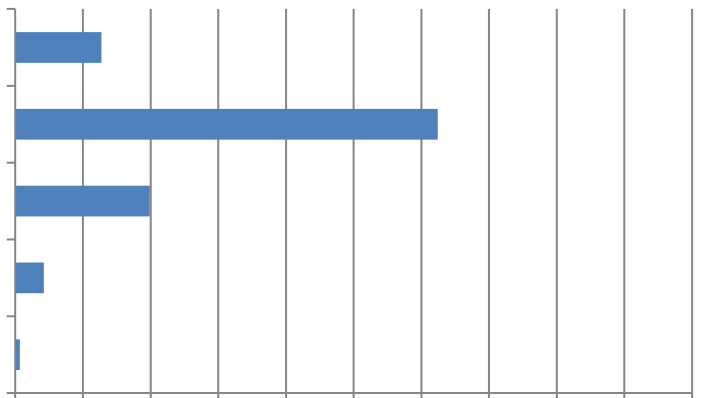
4. How do you feel about your state's 811/ one call system? Responses: 150



5. Is the 811-system responsive to all requests in a timely manner? Responses: 150



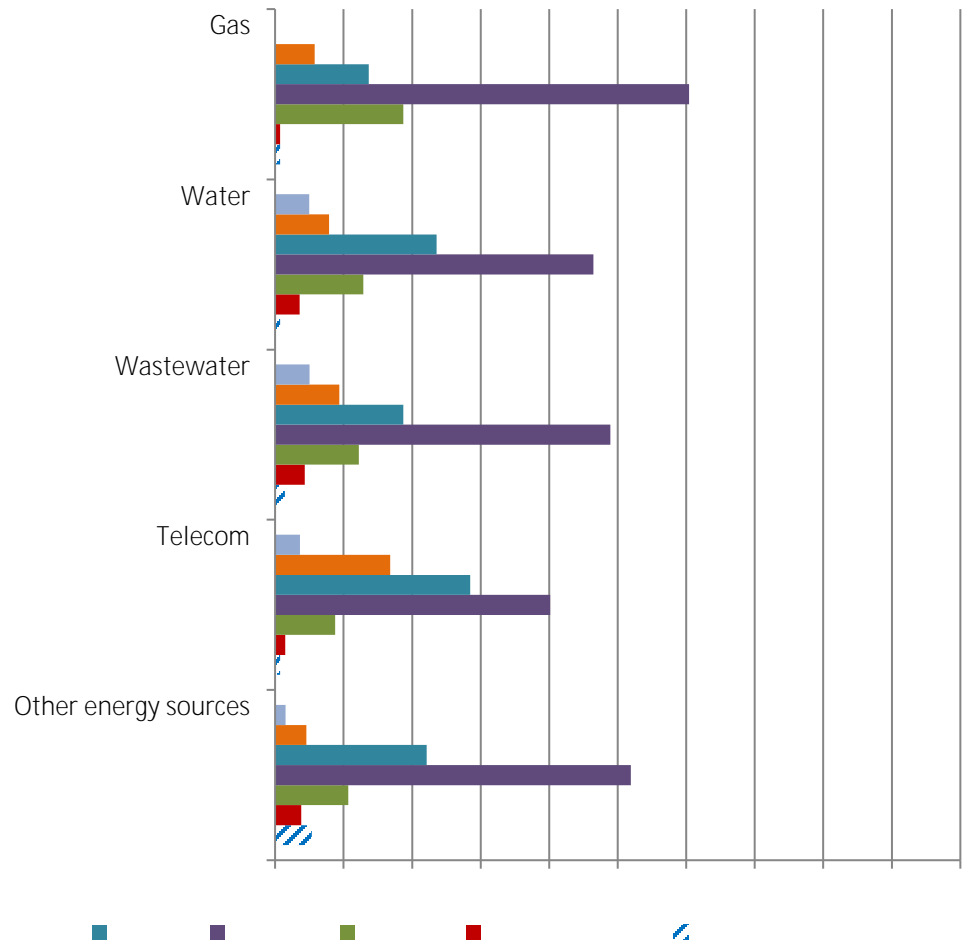
6. How long does it usually take the 811 system to respond? Responses: 141



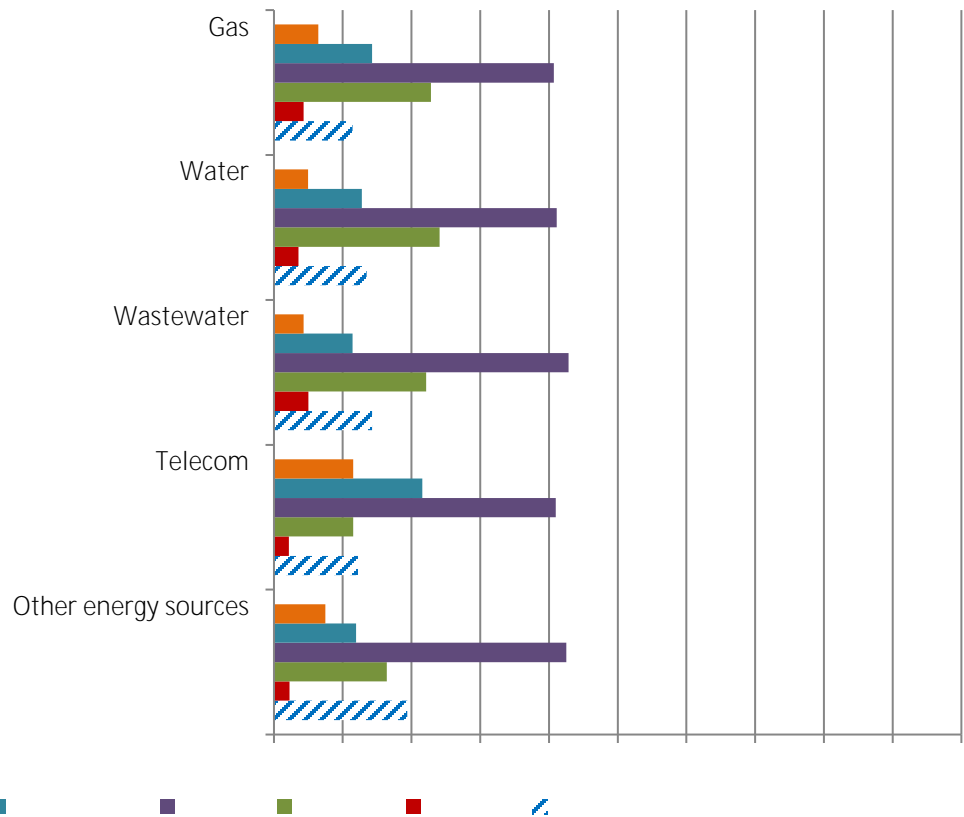
7. What do you believe is causing most of the delays? Responses: 140

8. Does your organization utilize the state 811 website for submitting tickets and online training resources?
Response: 141

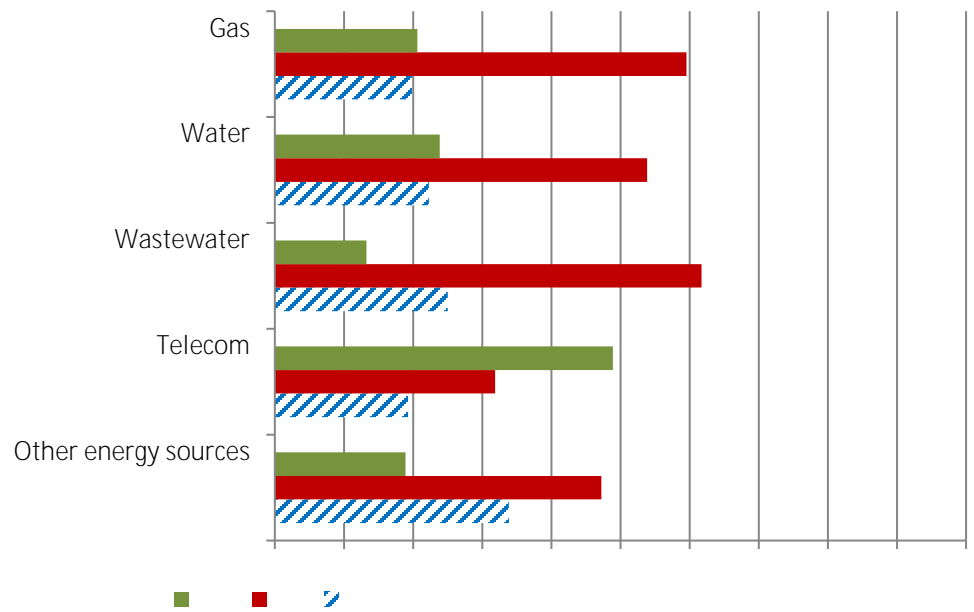
9. How satisfied are you with each utility sector's processes surrounding 811 systems? Responses: 141



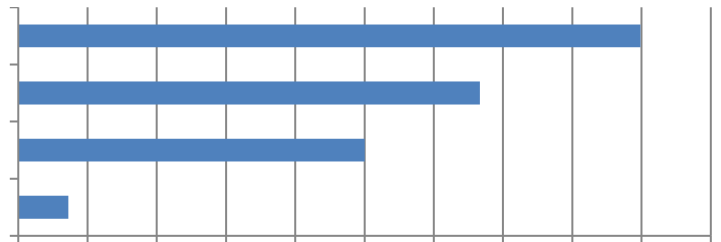
10. How often are utilities buried at documented depths? Responses: 141



11. Are any types of utilities more responsible for causing 811 response delays than others? Response: 139



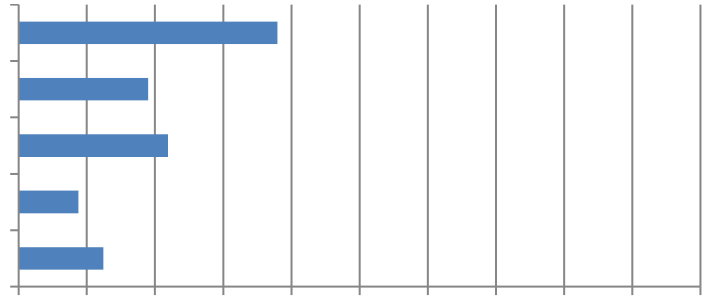
12. What of the following do 811 response delays affect? Responses: 138



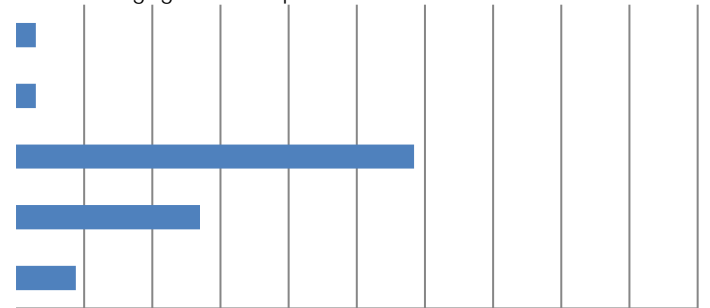
13. Do you "white line" the area you would like located in advance of submitting a locate request? Response: 139

14. Do you pothole prior to conducting utility excavation, if necessary? Response: 139

15. Does your organization utilize a dig permit to document the process steps taken prior to starting the excavation? Response: 137



16. What required training do you mandate your contractors engage in? Response: 137



17. Do you conduct training courses in-house or is this done by a third party? Response: 134

18. Does this training also apply to any subcontractors, third parties or union members that may be working on utility projects? Response: 134

19. Have you received an insurance claim relating to utility work within the past 12 months? Response: 134

24. Does your organization have a formal utility strike avoidance program? Responses: 126

25. How many workers does your company employ? Responses: 127

26. What types of excavating equipment do you primarily use? Responses: 128